



MONTHLY MEMBERSHIP PROGRESS REPORT

District 4 C6

Results as of: 06/30/2019

GMT: HOWARD HUDSON

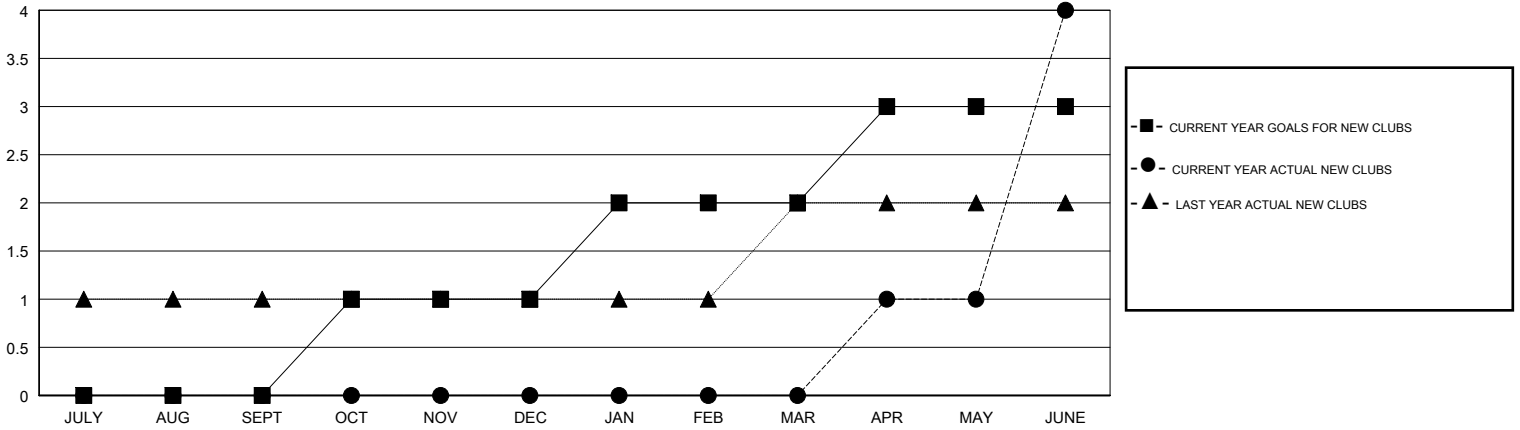
LOCATION CALIFORNIA

GMT CA

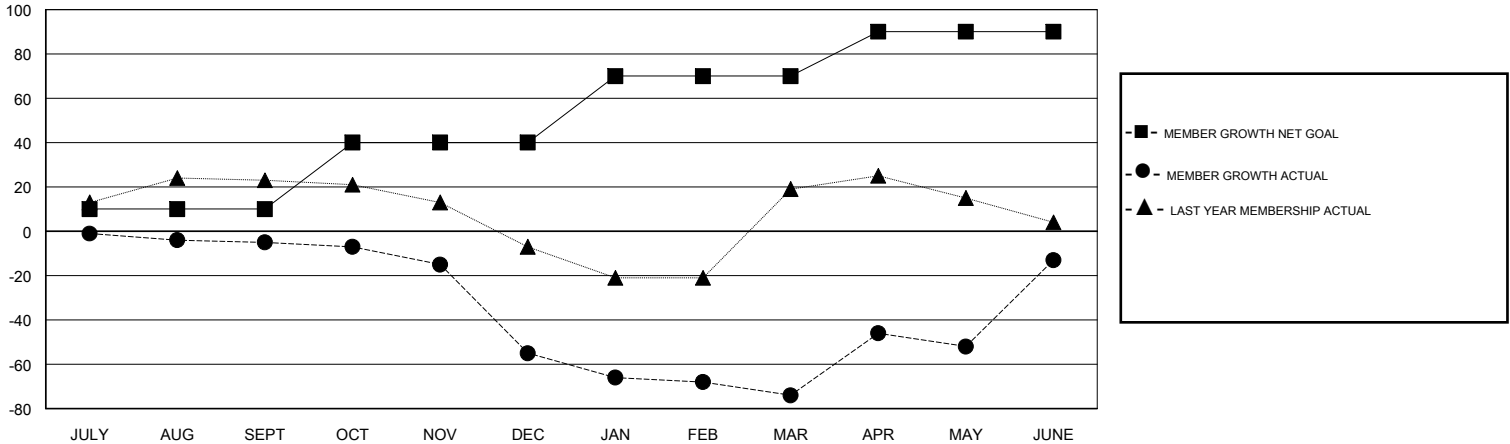
Clubs			
RESULTS FOR 2018-2019			
QUARTER	NEW CLUB GOAL	NEW CLUBS	DROPPED CLUBS
JULY/AUG/SEPT	0	0	0
OCT/NOV/DEC	1	0	0
JAN/FEB/MAR	1	0	0
APR/MAY/JUNE	1	4	0

Members			
RESULTS FOR 2018-2019			
QUARTER	MEMBER GROWTH NET GOAL	MEMBER GROWTH ACTUAL	DROPPED MEMBERS ACTUAL (including transfers)
JULY/AUG/SEPT	10	29	28
OCT/NOV/DEC	30	11	59
JAN/FEB/MAR	30	33	49
APR/MAY/JUNE	20	114	50

GOALS AND ACTUAL NEW CLUBS CUMULATIVE



GOALS AND ACTUAL MEMBERS CUMULATIVE



DROPPED CLUBS: 0

29 CLUBS OF 49 ADDED 1 OR MORE NEW MEMBERS

GENDER DISTRIBUTION	
MALE	673 (58.12%)
FEMALE	485 (41.88%)
Women Percentage Fiscal Year Goal: 50%	

DROPPED MEMBERS	
DECEASED	13
CLUB CANCELLED	0
OTHER	173
TOTAL	186

[CLICK HERE FOR CUMULATIVE MEMBERSHIP DATA](#)

TOTAL FAMILY UNIT MEMBERS	210
FAMILY MEMBERS PAYING HALF DUES	110